

BoBject

(building object)

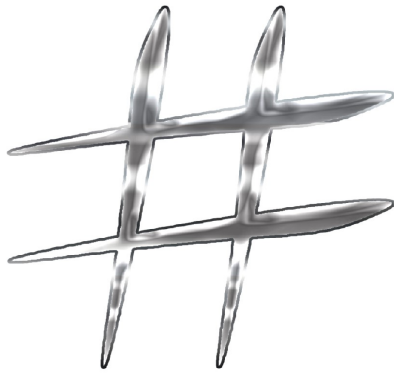
something required, now desired

Bobject.com.au

Individual Numbers & Letters Size and Spacing

Please read: The only common size on most alphabet characters is the height. These width measurements are a guide only and are based on the widest font "Euro", and the widest characters. The real width of a combination of characters should not be wider than the totals unless you leave a larger gap between the characters than what we have listed below. Depending on which font and what characters you have the width will often be less than these measurements. For example characters like "f, i, j, l, and t" are a lot narrower than the listed widths below.

Height	Character Width		Gap	Total width & Gap	Price
60mm	Uppercase	50mm	10mm	60mm	\$6
	Lowercase	37mm		47mm	
80mm	Uppercase	65mm	15mm	90mm	\$7
	Lowercase	50mm		65mm	
100mm	Uppercase	80mm	20mm	100mm	\$8
	Lowercase	62mm		82mm	
120mm	Uppercase	100mm	25mm	125mm	\$9
	Lowercase	75mm		100mm	
150mm	Uppercase	125mm	30mm	155mm	\$11
	Lowercase	95mm		125mm	
200mm	Uppercase	165mm	40mm	205mm	\$16
	Lowercase	125mm		165mm	
300mm	Uppercase	250mm	60mm	310mm	\$28
	Lowercase	190mm		250mm	



BoBject

(building object)

something required, now desired

Bobject.com.au

Character Width

Space

Character Size Explanation.

Ideally you should also allow at least twice the space to the left and right of your number set or words to allow the mounting surface to frame them.

Different fonts have different character widths to other fonts.

Width is variable

Height is common except on some lowercase letters

The diagram shows a large number '21' with red arrows indicating the width of the '2' and the space between the '2' and '1'. Below this, the words 'Whiting Street' are shown in a similar font, with red arrows indicating the width of the letters and the space between them. The text 'Whiting Street' is split across two lines, with 'Whiting' on the top line and 'Street' on the bottom line. Red lines are drawn under 'Street' to show its height relative to 'Whiting'.