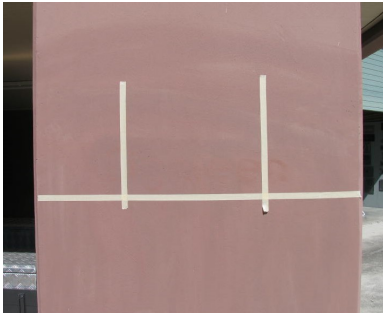


BoBject

BoBject.com.au Ph 1300 88 1211

Installation Guide for Numbers & Letters with Adhesive Sealant

1. First clean the wall so there is no dust or flaky paint and check that there is no moisture present.
2. Work out where you want to install the numbers or letters.
3. If you have multiple characters to install, lay them out on the ground and space them evenly, then measure the width of all the characters.



4. Now put a piece of masking tape across where the bottom of the characters will sit on the wall, (making sure that it is level) Now apply 2 pieces of masking tape vertically. If on a column then subtract the total width of the characters from the width of the column, divide the result by 2 then measure that distance from each edge of the column and apply the masking tape at that point.



5. Place the numbers / letters upside down on a towel or soft material to avoid scratching the face, and apply a thick bead of adhesive in the centre of the stroke of the character all the way around. The idea is that when you push the numbers into position the adhesive will spread out but not further than the edge of the number



6. Now simply fit the numbers in position using the masking tape to guide you. Apply a gentle pressure all the way around but don't push so hard that you squeeze the adhesive out from behind the number. The idea is to make the adhesive spread but also allow it to have a thickness so that there is a bit of flexibility between the wall and the number, this will allow the number material to expand and contract in the sun without losing adhesion with the wall.

7. Allow the adhesive to set at least 12 hours without any disturbance.

Maintenance

Wash with soapy water whenever it appears dirty or dusty.

Do not use window cleaner or abrasive cleaning products.

For stubborn marks use a small amount of Kerosene