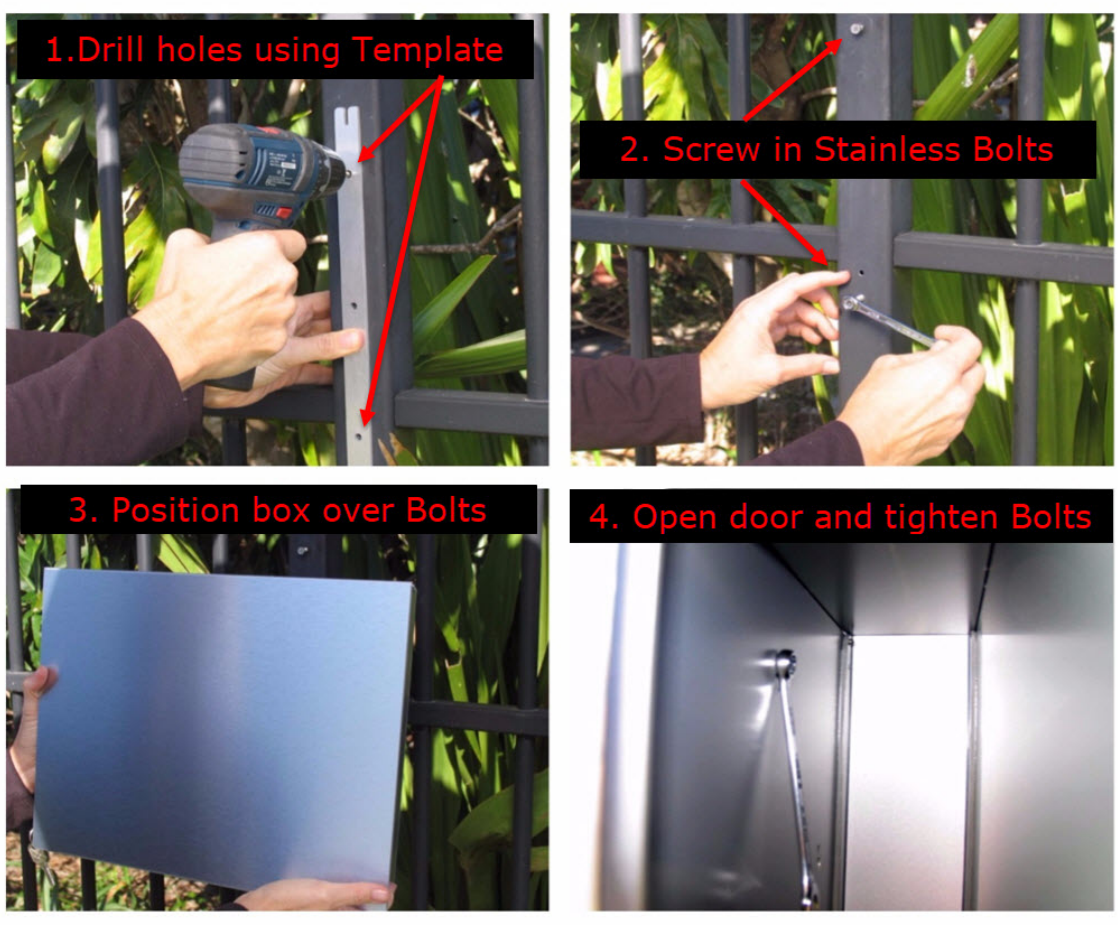


The Landscape Mountain Letterbox is 400mm wide, and 300mm high.

The Portrait Mountain Letterbox is 300mm wide, and 400mm high.

If mounting the Box to a single vertical post then just use the 2 vertical holes on the rear of the box.
If mounting the Box on a Solid wall or a fence with horizontal rails, then use the 2 horizontal holes.

- The centre hole in the template is the middle of the box whether you use it vertically or horizontally, so find the centre of your column, post, or wall and put a mark there.
- Position the template so this mark shows in the centre hole, then using a spirit level or measuring off a straight edge near by, make sure your template is exactly vertical or horizontal. (depending on which 2 holes you want to use) If the template is not correct then the box will not sit exactly horizontal.
- Now drill through the 2 outside holes of the template.
- You will require either a 7 millimetre diameter masonry drill for mounting to render, brick or concrete, or a normal 4 millimetre drill for timber or steel.
- If mounting onto render, brick, or concrete, then after drilling the holes, insert the green plastic plugs included.
- We include 2 little keyhole blanks to push into the 2 keyholes that are not used to keep out water.
- Now screw the 2 bolts into the wall / fence, so that they sit out about 8mm or so.
- Then lift the box so that the keyholes in the back slip over the head of the screws and drop down, then simply open the door of the box and screw the 2 bolts in firmly to lock it in place.



Maintenance

Wash with warm soapy water. For stubborn marks try a little bit of Kerosene.

We use a high quality lock with a brass tumbler to avoid corrosion, but if it becomes hard to turn the lock simply squirt a small amount of WD 40 into the lock to loosen it up.